

CREALITY
BLTouch



BLTouch Guidebook for Creality V2.1 Mainboard

Auto Bed Leveling Sensor for 3D Printer

This guidebook is for Creality V2.1 mainboard. It includes but is not limited to the following 3D printer:

CR-10S/CR-10 S4/CR-10 S5/CR20.

File download: <https://www.creality3d.cn/download/>



Website



Facebook

Scan QR code to view detail instruction

SHENZHEN CREALITY 3D TECHNOLOGY CO., LTD.

12/F, Block 3, JinChengYuan, Huafan Road, Tongsheng Community,
Dalang, Longhua District, Shenzhen, China, 518109

Official Website: www.creality3d.cn

Tel: +86 0755-2105 9455

E-mail: info@creality3d.cn cs@creality3d.cn

Packing List



BLTouch



Connectors



Rack



M3X6 2PCS

Screw



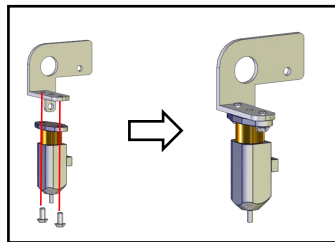
M3X8 2PCS

Screw

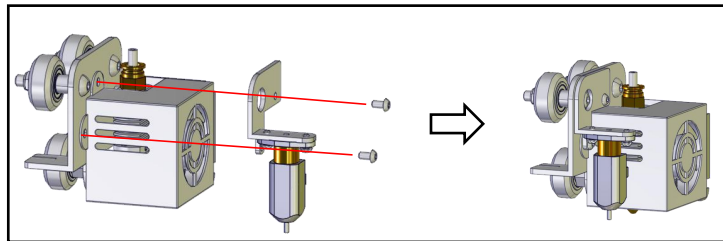
Install BLTouch



1、 Insert connectors into 5 pins Port.

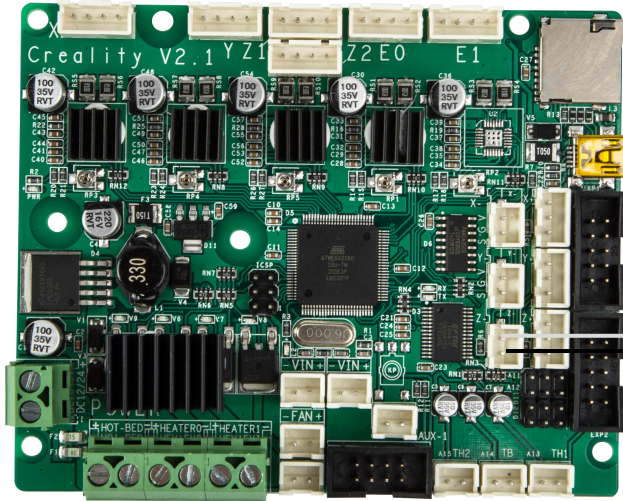


2、 Install BLTouch on the rack with 2 M3X6 screws



3、 Loosen all fan cover screws, Install the fan cover on the corresponding position with 2 M3X8 screws

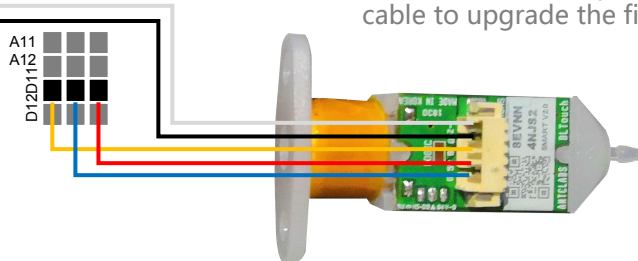
Circuit Wiring



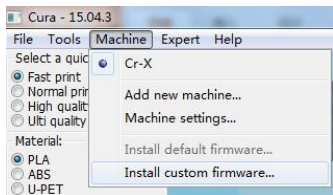
Computer

- 1、 Open the control box and find out the mainboard.
- 2、 Unplug the Z limit switch (Z port),and insert the connectors.
- 3、 Insert connectors into the mainboard D11 pins as the picutre shows.
- 4、 Close the control box.
- 5、 Connect ISP Pinboard and Burner.
- 6、 Connect computer with usb cable to upgrade the firmware.

A11
A12
D12D11



Update Firmware



Communication settings

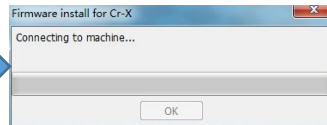
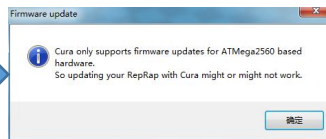
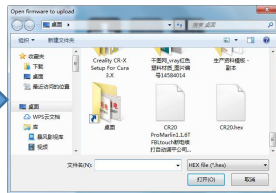
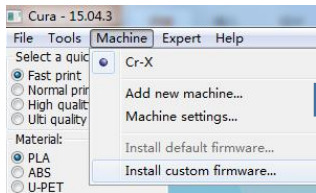
Serial port

COM1

Baudrate

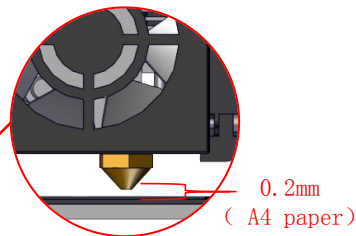
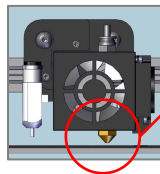
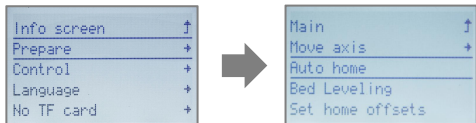
115200

Open Cura→Machine→Machine settings→Select Serial port (COM) & Baudrate (115200) .

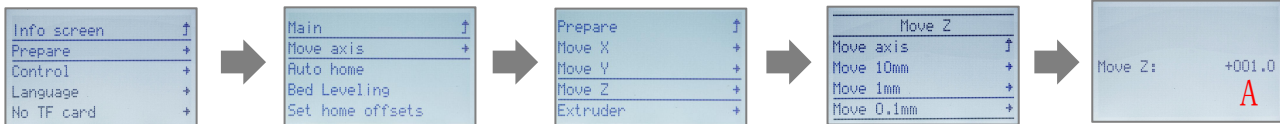


Machine→Install custom firmware→Select .hex file→Click OK to update , Waiting until it is finished, then click ok.

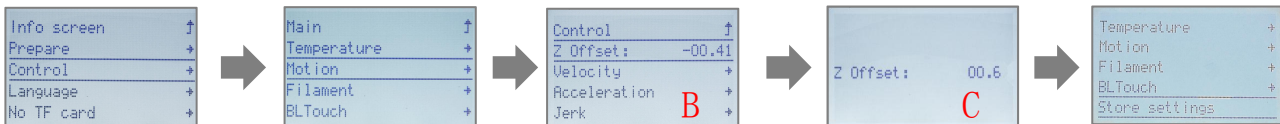
Platform Adjustment



1. Prepare → Auto home, and wait to stop.



2. Prepare → Move axis → Move Z → Move 0.1mm → Rotate the knob until the distance between them is about 0.2mm (as a sheet of A4 paper), write down the value of A.



3. Control → Motion → Z Offset → write down the value of B, then rotate the knob until it comes out as: $C=B+A$. Return Control and Select Store settings.